



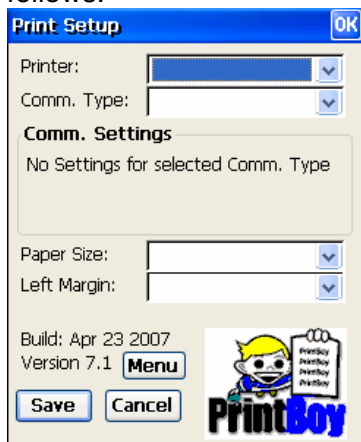
PrintBoy User Guide for the Nova5000

As an alternative to direct PCL printing or if your printer is not PCL-supported, use the Print Setup to configure your printer using the PrintBoy software. PrintBoy offers Nova5000 users printer support for a wide range of printer drivers.

Configuring Print Boy

1. Open the **Print Setup** icon.

The **Print Setup** dialog will open. The first time you open the dialog, it will appear as follows:

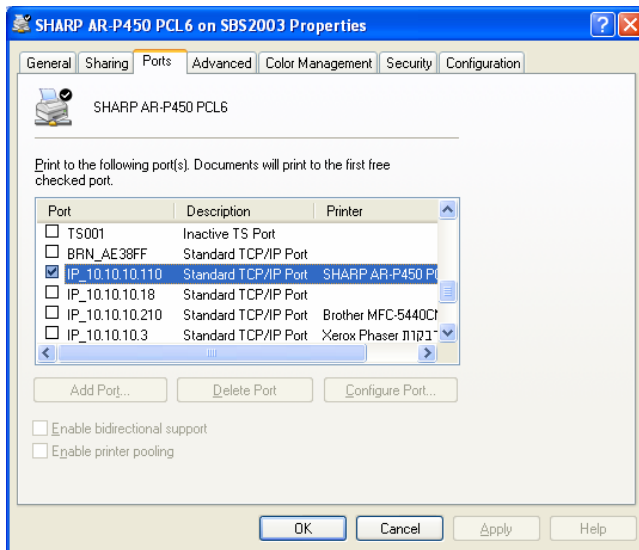


2. From the **Printer** drop-down menu, select a default printer driver which matches up with your target printer e.g. HP DeskJet 460.

Note: If your printer is not listed here, you can also try the **HP & Compatibles** option.

3. From the **Comm. Type** drop-down menu, set the communications path which will be used to connect to the printer.
 - a. If you are printing via direct USB connection to Nova5000, select **USB**.
 - b. If you are printing to a Network printer, select **Network**.
4. Enter the **Comm. Settings** (if printing to a Network printer).
 - a. Enter the IP address of the printer on the network.

Note: To find the IP address of your network printer, go to **Start > Printers and Faxes** (in WinXP). Under **Printer Tasks** click **Set printer properties**. Click **Ports** in the **Properties** dialog. The IP address is listed in the **Port** column next to the relevant network printer (see screen shot below).

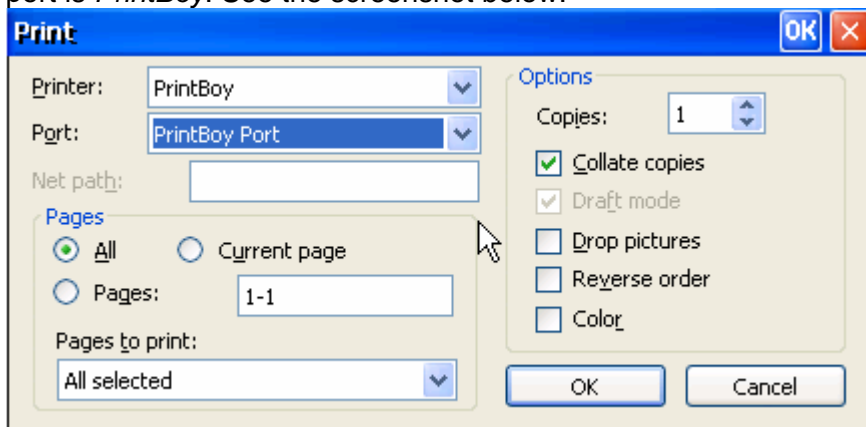


- b. Enter the destination IP Port which can be used for printing (for many printers, typically 9100).
5. Select the **Paper Size** from the drop-down menu (default is Letter).
6. Select the **Left Margin** position from the drop-down menu (default is zero).
7. Click **Save** to save your settings.
8. Click **OK** to exit the Print Setup dialog.

Printing from Nova5000 Applications

When you go to print from within a Nova5000 application, you must select the print driver called **PrintBoy**. This is the PrintBoy virtual driver component, and this component will use the print settings which you configured in the prior step in PrintBoy's print setup. You may disregard other settings on this dialog box, they are ignored.

For example, when you enter the TextMaker Print Setup dialog, the selected printer and port is *PrintBoy*. See the screenshot below:





Color Printing

Color printing is enabled by choosing the color option in the main Windows CE print dialog. If the destination printer driver can support color, it will print in color, otherwise it will back off and default to black and white.

Supported Printers

Refer to the *PrintBoy Printer Matrix* PDF for a list of supported printer drivers. This document is available on the Nova5000 Download Center on the Fourier website or from your Nova5000 dealer.

You can also use the **Printer** drop-down menu in the **Print Setup** dialog to see which printers are supported.